

INSTALLATION & OPERATION MANUAL

3890 SERIES MASTERCOM SIREN



Code 3, Inc., a subsidiary of
Public Safety Equipment, Inc.

CODE 3[®]
PUBLIC SAFETY EQUIPMENT, INC.

MASTERCOM[™]

SIRENS AND CONTROLS

Contents:

Introduction	2
Standard Features	2
Unpacking & Pre-Installation	4
Installation & Mounting	5
Set-Up and Adjustment	8
Operation	11
Maintenance	13
Troubleshooting	14
Parts List (Replacement Parts / Exploded View)	16
Wiring Diagram	20
External Ignition Lead Relay	21
Common MIC Option	22
Options	23
Specifications	23
Notes	25
Warranty	26

Distributed By:

SIRENNET[®]

IMPORTANT:

INSTALLER Read all instructions and warnings before installing and using.
This manual must be delivered to the end user of this equipment.

Introduction

The enhanced 3890 series siren is an improved series of electronic sirens that has been designed to meet the needs of all emergency vehicles. This series of sirens incorporates the popular packaging and features of the original Mastercom siren with microprocessor based circuitry and MOSFET technology. Most of the original Mastercom features are available along with many new added features that are not available on any other Code 3 siren such as; **Park Kill, Instant "ON", Adj. Backlighting, " Scroll " Mode and more.**



Sirens are an integral part of an effective audio/visual emergency warning system. However, sirens are only short range secondary warning devices. The use of a siren does not insure that all drivers can or will observe or react to an emergency warning signal, particularly at long distances or when either vehicle is traveling at a high rate of speed. Sirens should only be used in a combination with effective warning lights and never relied upon as a sole warning signal. Never take the right of way for granted. It is your responsibility to be sure you can proceed safely before entering an intersection, driving against traffic, or responding at a high rate of speed.

The effectiveness of this warning device is highly dependent upon correct mounting and wiring. Read and follow the manufacturer's instructions before installing or using this device. The vehicle operator should check the equipment daily to insure that all features of the device operate correctly.

To be effective, sirens must produce high sound levels that potentially can inflict hearing damage. Installers should be warned to wear hearing protection, clear bystanders from the area and not to operate the siren indoors during testing. Vehicle operators and occupants should assess their exposure to siren noise and determine what steps, such as consultation with professionals or use of hearing protection should be implemented to protect their hearing.

This equipment is intended for use by authorized personnel only. It is the user's responsibility to understand and obey all laws regarding emergency warning devices. The user should check all applicable city, state and federal laws and regulations.

Code 3, Inc., assumes no liability for any loss resulting from the use of this warning device.

Proper installation is vital to the performance of the siren and the safe operation of the emergency vehicle. It is important to recognize that the operator of the emergency vehicle is under psychological and physiological stress caused by the emergency situation. The siren system should be installed in such a manner as to: A) Not reduce the acoustical performance of the system, B) Limit as much as practical the noise level in the passenger compartment of the vehicle, C) Place the controls within convenient reach of the operator so that he can operate the system without losing eye contact with the roadway.

Emergency warning devices often require high electrical voltages and/or currents. Properly protect and use caution around live electrical connections. Grounding or shorting of electrical connections can cause high current arcing, which can cause personal injury and/or severe vehicle damage, including fire.

PROPER INSTALLATION COMBINED WITH OPERATOR TRAINING IN THE PROPER USE OF EMERGENCY WARNING DEVICES IS ESSENTIAL TO INSURE THE SAFETY OF EMERGENCY PERSONNEL AND THE PUBLIC.

Standard Features

The enhanced 3890 series sirens consist of integrated controls and amplifier in a single package with 4 and 6 circuit lighting controls available as well. The models are as follows:

- 3892** - Primary Tones: Wail, Yelp, Hi-Lo, Air Horn
- Secondary Tones: HyperYelp, HyperLo

- 3892L4,L6** - Primary Tones: Wail, Yelp, Hi-Lo, Air Horn
- Secondary Tones: HyperYelp, HyperLo
- 4 or 6 auxillary lighting controls

3894L6S same features as 3892L6 with an addition of a rear panel connector to accommodate a single microphone system.

The following features are standard in the new style 3890 series (tones and sequences may differ by model number):

Instant-On- There is no " ON/OFF " switch. Selecting any siren function, or keying the microphone will activate the siren assuming the siren is connected directly to a non-ignition switched source of +12V.

SirenLock™ (L4 and L6 Models Only)- An interlock circuit between the siren and the light control circuits that permits automatic siren tones only when the progressive switch is in Level 3 or in Level 2 or 3 (user selectable - works in conjunction with the horn transfer relay). This feature is used in jurisdictions that require warning lights to be on before the siren is activated.

Park Kill- This feature deactivates the siren tones when the vehicle is shifted into park. Once **PKILL** is activated the siren will remain deactivated until an action occurs such as moving the selector switch to **STANDBY**, returning lighting level switch to position one or keying the microphone. Any action will enable the siren tones to function again with the exception of the auxillary lighting pushbuttons. On lighting models this also drops-out the Level 3 lighting output for a power- down mode when in park.

Adjustable Backlighting- Backlighting is independent of siren power. Allows connecting to dimmer if desired.

Radio Power- Allows user to power the two-way radio from the siren when the ignition is "OFF".

Automatic Short Circuit Protection- The siren will sense a short circuit on the speaker terminals and automatically go to standby until the fault is removed. Once the fault is removed the siren will return to normal operation.

Lighting Level "3 " Drop-out- When vehicle is shifted to **PARK** and the **PKILL** feature is connected, Level 3 lighting will drop-out. This is indicated by the "red" LED extinguishing. This is a power down mode and can be defeated by setting the 4 -position rear dip switch to the **PKILL "OFF"** position on the lighting board.

Scroll Mode- Setting the slide switch on the rear of the siren to the **SCROLL** position will put siren in scroll mode. This will allow "scrolling" through tones utilizing sharp taps on the horn ring, or a switch, via the Remote siren input. In this mode holding the horn ring for prolonged durations will produce the Airhorn sound. See **OPERATION** section for further details.

Hit-n-Go Mode - Setting the slide switch on the rear of the siren to the **Hit-N-Go** position will put the siren in the **Hit-n-Go** mode. This mode will be most familiar to existing Mastercom users. A seven second override is standard for all tones when activated by the **Manual** button or the **Remote** input. See **OPERATION** section for details.

Automatic Siren Tones - Industry standard **Wail**, **Yelp**, and **Hi-Lo** tones.

AIR HORN Tone - Electronic **AIR HORN** sound.

Instant Public Address - Public Address override of all siren functions when the microphone **Push-to-Talk** key is pressed.

Status LED - An indicator LED, visible on the front panel that informs the operator of the status of his siren at all times.

Radio Rebroadcast - Broadcast Two-way radio reception over siren speakers. These inputs are transformer coupled to prevent loading of the radio.

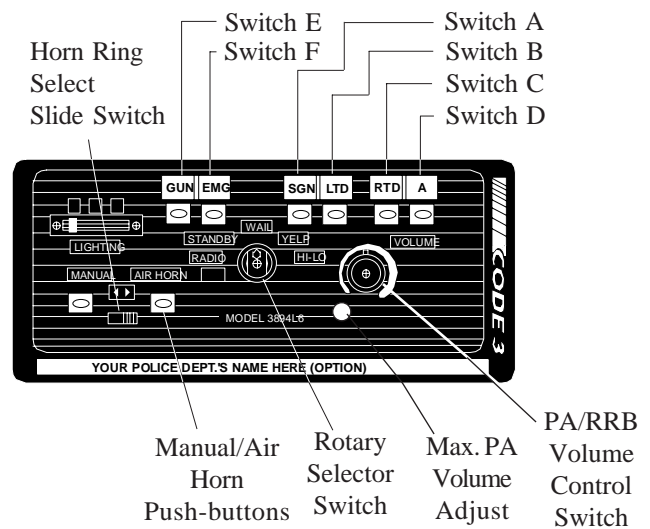


Figure 1 - Control Panel

Remote Siren Switching - The siren accepts either a positive or a ground (earth) signal, usually from the vehicle's horn switch (or other user supplied switch), and remotely activates the MANUAL or AIR HORN (if supplied) function. Selection is made via the front panel slide switch. **The siren is factory set for a GND (Earth) signal and may be reconfigured to accept a positive signal. See Set-up and Adjustments section for details.**

Tone Priority/Manual Wail - The following tones are produced while pushing the MANUAL Push-button or triggering the user-supplied REMOTE siren switch:

Manual Wail when the MANUAL Push-button is depressed while the rotary switch is in the STANDBY position.

Yelp when the MANUAL Push-button is depressed while the rotary switch is in the WAIL position.

HyperYelp when the MANUAL Push-button is depressed and the rotary switch is in the YELP position.

HyperLo when the MANUAL Push-button is depressed and the rotary switch is in the HI-LO position.

Noise Cancelling Microphone - Wired in microphone that is easily unplugged internally for service or replacement.

Power Distribution Section - A three level progressive switch for primary warning light system control plus 4 push-on/push-off auxiliary switches that are user convertible to momentary action ('L4 models). The unit may also be purchased with 6 auxiliary switches ('L6 models).

Each auxiliary switch can be custom labeled with the supplied label kit. Each label is backlit and increases intensity when activated to alert the operator. Each position of the progressive switch has its own indicator LED.

Horn Ring Transfer - ('L models only) Built in horn transfer relay that may be activated at Levels 2 and 3 of the warning light progressive switch. Point of activation is customer selectable with the rear panel DIP switch.

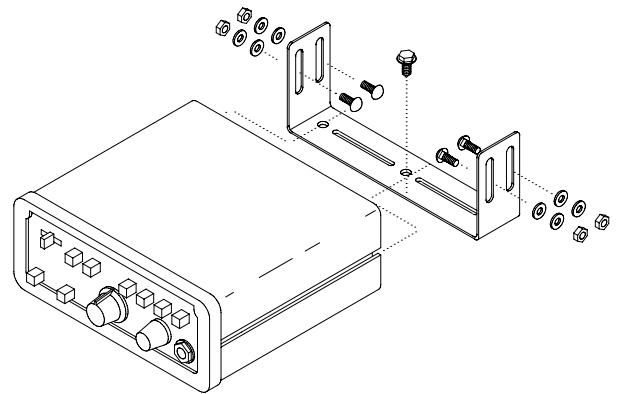


Figure 2

Unpacking & Pre-installation

After unpacking your 3890 series siren, carefully inspect the unit and associated parts for any damage that may have been caused in transit. Report any damage to the carrier immediately



WARNING!

All devices should be mounted in accordance with the manufacturer's instructions and securely fastened to vehicle elements of sufficient strength to withstand the forces applied to the device. Ease of operation and convenience to the operator should be the prime consideration when mounting the siren and controls. Adjust the mounting angle to allow maximum operator visibility. Do not mount the Control Head Module in a location that will obstruct the drivers view. Mount the microphone clip in a convenient location to allow the operator easy access. Devices should be mounted only in locations that conform to their SAE identification code as described in SAE Standard J1849. For example, electronics designed for interior mounting should not be placed underhood, etc.

Controls should be placed within convenient reach of the driver or if intended for two person operation, the driver and/or passenger. In some vehicles, multiple control switches and/or using methods such as "horn ring transfer" which utilizes the vehicle horn switch to toggle between siren tones may be necessary for convenient operation from two positions. Controls should be placed within convenient reach* of the driver or if intended for two person operation the driver and/or passenger. In some vehicles, multiple control switches and/or using methods such as "horn ring transfer" which utilizes the vehicle horn switch to toggle between siren tones may be necessary for convenient operation from two positions.

Installation & Mounting

The 3890 series siren may be mounted above the dash, below the dash, on a tunnel or in a rack with the mounting bracket (bail) and the hardware supplied (see Fig. 2). Ease of operation and convenience to the operator should be the prime consideration when mounting the siren and controls.

The bail is mounted to the siren chassis by means of the "T" slot in the side of the unit and the 1/4-20 carriage bolts, washers, and nuts supplied. See Figure 2 for assembly and positioning details. Note that once the unit is installed, removal involves only loosening, not removing, the acorn nuts. Use of 1/4 - 20 HEX head bolts can damage slots and prevent easy removal of the unit.

NOTE: Set-ups and adjustments will be made in subsequent steps, depending upon the model and options purchased, that may require access to the rear area of the unit. Plan the installation and wiring accordingly.

Amplifier Connections

Siren Amplifier Connector - As a standard feature, the Siren and Auxiliary sections ('L4 & 'L6 models) of your unit come equipped with a combination plug-in terminal block/connector. To terminate the wires, strip approximately 1/4" of insulation from the end of each wire and insert it in the appropriate hole in the terminal block. Recommend using a screwdriver with a 1/8" wide blade with a 6" shaft such as an Xcelite(C) R186 or equivalent rather than a 4 1/2" adjustment screwdriver to ensure proper torque on the screws. Tighten the set-screw and proceed to the next connection.

Should you ever have to remove the unit, pull the terminal block straight out. It will unplug from the unit, leaving the wiring in place.



WARNING!

Larger wires and tight connections will provide longer service life for components. For high current wires it is highly recommended that terminal blocks or soldered connections be used with shrink tubing to protect the connections. Do not use insulation displacement connectors (e.g. 3M®) Scotchlock type connectors). Route wiring using grommets and sealant when passing through compartment walls. Minimize the number of splices to reduce voltage drop. High ambient temperatures (e.g. underhood) will significantly reduce the current carrying capacity of wires, fuses, and circuit breakers. Use "SXL" type wire in engine compartment. All wiring should conform to the minimum wire size and other recommendations of the manufacturer and be protected from moving parts and hot surfaces. Looms, grommets, cable ties, and similar installation hardware should be used to anchor and protect all wiring. Fuses or circuit breakers should be located as close to the power takeoff points as possible and properly sized to protect the wiring and devices. Particular attention should be paid to the location and method of making electrical connections and splices to protect these points from corrosion and loss of conductivity. Ground (Earth) terminations should only be made to substantial chassis components, preferably directly to the vehicle battery. The user should install a circuit breaker sized to approximately 125% of the maximum Amp capacity in the supply line to protect against short circuits. For example, a 30 Amp circuit breaker should carry a maximum of 24 Amps. **DO NOT USE 1/4" DIAMETER GLASS FUSES AS THEY ARE NOT SUITABLE FOR CONTINUOUS DUTY IN SIZES ABOVE 15 AMPS.** Circuit breakers are very sensitive to high temperatures and will "false trip" when mounted in hot environments or operated close to their capacity.



CONNECTION OF A 58 WATT SPEAKER TO THE SPKR TERMINAL WILL CAUSE THE SPEAKER TO BURN OUT, AND WILL VOID THE SPEAKER WARRANTY!

The sound projecting opening should be pointed forward, parallel to the ground, and not obstructed or muffled by structural components of the vehicle. Concealed or under-hood mountings in some cases will result in a dramatic reduction in performance. To minimize this reduction, mount the speaker so the sound emitted is projected directly forward and obstruction by vehicle components such as hoses, brackets, grille, etc. is minimized. Electromechanical sirens and electronic siren speakers should be mounted as far from the occupants as possible using acoustically insulated compartments and isolation mountings to minimize the transmission of sound into the vehicle. It may be helpful to mount the device on the front bumper, engine cowl or fender; heavily insulate the passenger compartment; and operate the siren only with the windows closed. Each of these approaches may cause significant operational problems, including loss of siren performance from road slush, increased likelihood of damage to the siren in minor collisions, and the inability to hear the sirens on other emergency vehicles.

APPROPRIATE TRAINING OF VEHICLE OPERATORS IS RECOMMENDED TO ALERT THEM TO THESE PROBLEMS AND MINIMIZE THE EFFECT OF THESE PROBLEMS DURING OPERATIONS.

Terminal Block Connections

10 Position Terminal Plug- (see wiring diagram page 20)

COM - Connect to the terminal marked "1" of one 100 W (11 ohm) speaker.

SPKR - Connect to the terminal marked "2" of the 100 W (11 ohm) speaker..

NOTE: An optional 200 W version is available. This will enable the user to connect two 100 W speakers in parallel. Correct phasing is important and can be accomplished by connecting both speaker terminals marked " 1 " to the **COM** terminal and both speaker terminals marked " 2 " to the **SPKR** terminal.

REMOTE - Remote switch (Horn ring or foot switch). Circuit can be configured for both ground (earth) or positive signals. A horn ring transfer circuit is standard in all 3940 series "L" models. Connect to the "REMOTE" terminal on the Lighting Control Section terminal block. Unit is configured for a ground (earth) at the factory. See page 7 for details on configuring for a +12V input.

BLTG- Provides +12V to siren backlighting. Connect to a vehicle circuit that is powered when the ignition switch is " on ". If backlighting dimming is desired, connect to the dash lights' circuit.

Caution- If connected to the battery the backlighting will be active at all times.

PKILL- This feature automatically deactivates siren tones when the vehicle is shifted into PARK. On models with lighting control Level 3 will " drop-out " if this feature is enabled via the rear panel dip switch. Siren tones will be disabled until the vehicle is shifted out of PARK and the front panel selector switched is either returned to standby (or another function is selected) or the lighting level control is returned to level 1.

This circuit is activated by a negative signal. Connect this input to a circuit that is GROUNDED (Earth) when the vehicle is shifted into PARK. **It is the installer's responsibility to determine an appropriate location in the vehicle circuitry to connect this wire.**

RRB - Connect to one side of the two-way radio speaker.

RRB - Connect to the second side of the two-way radio speaker.

EXPWR - Connect directly to +12V terminal of the battery or a non-ignition switched source of +12V capable of supplying a minimum of 10 Amps.

RPWR- Provides +12V to the two-way radio with the ignition on / off . Connect the +12V power lead from the radio to this terminal. **This is a 10 Amp maximum current output.**

InterClear® (Optional) - Connect to the device or circuit that is to be activated by the InterClear feature. The InterClear circuit is internally current limited at 1 Amp. Should your requirements require higher currents, use the InterClear Power Booster Kit (# INTBS), available from your Code 3 supplier.

1/4" Male Quick-Connect Printed Circuit Board Terminals

+12V - Connect to a positive +12 volt DC source. It is recommended that the user protect this wire with a 10 Amp fuse (20 Amp for 200w option) or circuit breaker located at the source. Use #14 gauge wire terminated with **1/4" female, fully insulated quick-connect terminals only.**

NEG - Connect to the negative terminal of the battery. This supplies ground (earth) to the siren. Use #14 gauge wire terminated with **1/4" female, fully insulated quick-connect terminals only.**

Power Distribution Connections ("L" Models)

A #8 stud is provided on the rear of the unit and is intended for use **ONLY** as a convenient ground (earth) " tie-point " for the light bar wiring. **It is not an adequate ground (earth) for the siren or the light bar. It is recommended all ground (earth) wires attached here be terminated with a crimp-on ring terminal.**

11-Position Terminal Plug - Rear Panel- (See Wiring Diagram page 20)

IMPORTANT!

Remember auxillary outputs A,B,D on L4 models and A,B,D,E,F on L6 models can supply a maximum of 20 Amps each for a combined total of 30 Amps. Install appropriate fuses in each output wire as close to the siren as possible.

SW D - Connect to the load to be controlled by Auxiliary Switch "D".

SW B - Connect to the load to be controlled by Auxiliary Switch "B".

SW C NO - Connect to the load to be controlled by the normally-open contact on Auxiliary Switch "C".

SW C NC - Connect to the load to be controlled by the normally-closed contact on Auxiliary Switch "C".

SW C COM - Common or power feed for Auxiliary Switch "C". Terminals are a SPDT circuit that may be connected as a momentary (or timed momentary with option) ignition controlled circuit, or used for switching auxiliary circuits. It will Handle 10 Amps, and should be protected with a fuse at the battery if individually fed. Can also be connected to a ground source if the load on SWC NO or SWC NC is already connected to a 12V source and needs a ground input to activate it.

SW F - (L6 models only) Connect to the load to be controlled by Auxiliary Switch "F".

SW A - Connect to the load to be controlled by Auxiliary Switch "A".

SW E - (L6 models only) Connect to the load to be controlled by Auxiliary Switch "E".

HORN RING - Connect to the wire coming from the vehicle horn switch at the steering wheel.

HORN - Connect to the vehicle horn or vehicle horn ring relay.

REMOTE - Connect to the Remote terminal on the Siren Amplifier Connector.

Lighting Models Only (L versions)

#8 GAUGE RED WIRE PIGTAIL - provides power to the 3 Level, progressive lighting outputs only. The wire can be ordered with an optional connector to allow for convenient removal. The connector should be soldered to each wire, NOT crimped. This connection is designed to provide 50 amp service and therefore nothing smaller than #8 gauge wire should be connected to it. The circuit breaker used should be sized for the actual load of the lighting used and located as close to the battery positive as possible. For quick disconnection option on 8 AWG wire see "lighting switch connector" on page 23.

4 Position Screw-type Terminal Block Connector

Important!

The total combined current for the auxillary outputs A,B,D on L4 models and A,B,D,E,F on L6 models must not exceed 30 Amps total.

+12VAUX - Connect to the positive terminal of the battery with 30 Amp circuit protection. Locate the fuse or circuit breaker at the battery and use #10 gauge wire minimum. This terminal powers switches A,B and D on L4 models and A,B,D,E and F on L6 models, and also supplied power to the siren lock & light alert circuits on both models.

LEVEL 1 - Connect to the first level of warning lights (Green LED) position "1" on level switch.

LEVEL 2 - Connect to the second level of warning lights (Yellow LED) position "2" on level switch.

LEVEL 3 - Connect to the third level of warning lights (Red LED) position "3" on level switch.

NOTE: LEVEL 1, LEVEL 2, LEVEL 3, switch progressively. Switch position 1 provides +12 volts at Level 1 terminal. Switch position 2 provides +12 volts at terminals 1 and 2. Switch position 3 provides +12 volts at terminals 1, 2, and 3.

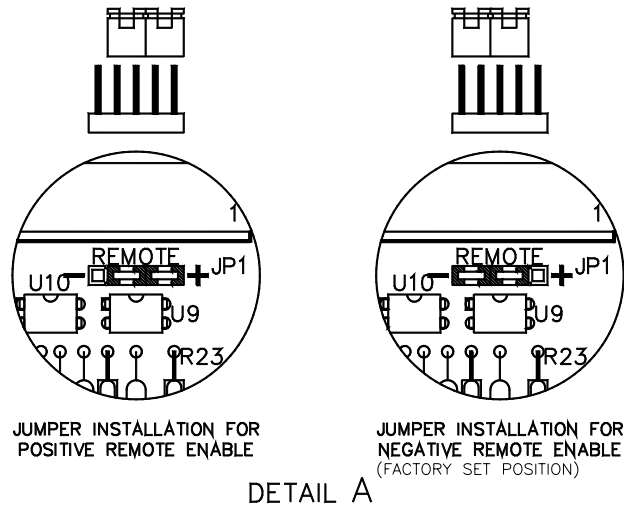
SET-UP AND ADJUSTMENT

All of the adjustments, **except MAXIMUM P.A. ADJUSTMENT**, and set-up switches are accessible from the rear of the unit. Make these adjustments and position the set-up switches prior to placing the unit inside their bail bracket (see wiring diagram, page 20).

Audio Adjustments

Radio Rebroadcast Adjustment - Place the selector switch in the RADIO position. The trimmer located on the rear panel of the siren sets the maximum level RRB will reach with the knob fully clockwise. To adjust properly, set the volume knob fully clockwise and adjust the trimmer such that normal two-way radio volume inside the vehicle produces the desired volume outside the vehicle.

Maximum P.A. Volume Adjustment - This trimmer (located on the front panel next to the volume control knob) sets the maximum level that the P.A. volume will reach with the front panel VOLUME control in the fully clockwise position. To adjust properly, set the front panel volume control fully clockwise and adjust the trimmer while keying the microphone until the maximum volume out of the speaker is such that there is no feedback and is intelligible. (See Figure 1)



Remote Input

The remote input can be configured to accept either a positive +12V or negative GND (Earth) signal for actuation. All new style 3890 series sirens are shipped set-up to accept the **GND** (Earth) signal from the vehicle HORN SW present on most vehicles. To reconfigure this as a +12V signal the rear plate must be removed (see assembly explosion page 19). Place both jumpers towards the "+" position. Refer to Detail "A" shown above for a complete illustration.

4-Position DIP Switch

Gently set the **SirenLock**, **PKILL** and **LightAlert** set-up switches to the desired position with a pencil point or some other pointed object. These switches are present even if LightAlert were not specified. If switched on, all of the tones except AIR HORN, mute until the Warning Light Switch is in either the Level 3 or the Level 2 or 3 positions.

SirenLock - In position "3" the siren tones are allowed to sound and the horn ring relay transfers when the Warning Light switch is placed in the Level "3" position. In position "2,3" the siren tones are allowed to sound and the horn ring relay transfers when the Warning Light switch is placed in either Level 2 or in Level 3 position.

LightAlert - When in the ON position, enables the LightAlert tone, which alerts the operator audibly when any lighting switch is activated. When in the OFF position, defeats the LightAlert tone.

PKILL- When vehicle is shifted to PARK lighting level 3 will " drop-out " if this switch is in the "on" position. This is intended to reduce power consumption while vehicle is not moving. If it is not desired to have level 3 "drop-out" this switch should be set to the " OFF " position on the dip switch. **This will not defeat the PKILL feature on the siren, but will defeat the level 3 DROP out.**

Siren Mode Selector Slide Switch

The siren has two distinct modes, **Hit-N-Go** and **Scroll**. Set rear panel slide switch to the desired mode by sliding left or right. See operation section for detailed operation in each mode.

Push-Button Conversion

(L models only)

Switches A-F can be set up as momentary (only on while pushed), or push-on/push-off. They can be converted as follows:

1. Disconnect all connectors and wiring to unit. Remove siren from the vehicle if it is installed.
2. Remove the screw holding the rear cover plate to the siren tray.
3. Remove the (4) screws holding the bezel to the extrusion.
4. Slide the front panel/tray assembly forward out of the extrusion.
5. Grasp the rear edge of the Power Distribution Circuit Board (on top), slide it back and lift it free from the (4) standoff fasteners holding it to the lower circuit board. Caution: The circuit board is still attached. See steps 6 & 7 below.
6. Note the orientation of the circuit board four-pin connector and remove.
7. Do the same with the lighting level switch four-pin connector.
8. See Figure 3 for information on converting the switch. Once converted the switch may be converted back again if the toggle pin is not lost.
9. Re-assemble the siren in the reverse order. Note correct orientation of the four and three-pin harness connectors.

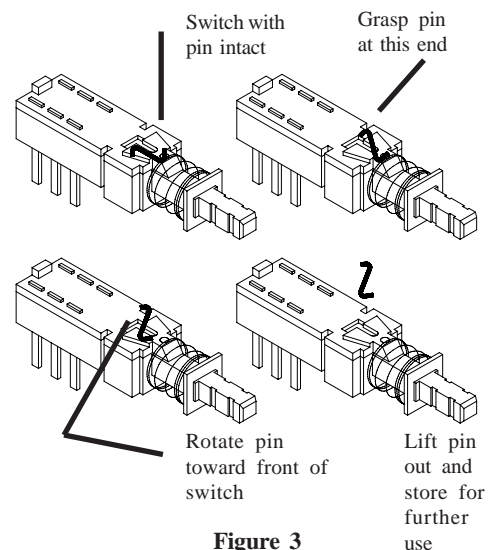


Figure 3

Custom Labeling

Labels supplied with the L4 and L6 models should be selected and placed in the appropriate windows. See fig 1 for front view of siren, for switches A-F window designations. The windows



WARNING!

"Wail" and "Yelp" tones are in some cases (such as in the state of California) the only recognized siren tones for calling for the right of way. Ancillary tones such as "Air Horn", "Hi-Lo", "Hyperypelp", and "Hyperlo" in some cases do not provide as high a sound pressure level. It is recommended that these tones be used in a secondary mode to alert motorists to the presence of an emergency vehicle.

P.A. VOLUME Knob - This control adjusts the level of the P.A. audio produced when keying the microphone and speaking into it. This control also controls the Radio Re-broadcast level when in the " Radio " position (see SET-UP, Radio Rebroadcast Adjustment on p. 8).

Operation

IMPORTANT !

The Mastercom Series has two distinct modes of operation. These are the Hit-N-Go mode and the SCROLL mode. The desired mode of operation can be selected via the rear panel slide switch. Each mode will effect the siren operation as described below. The Hit-N-Go mode should be most familiar to existing Mastercom users.

The siren tones will be deactivated when the vehicle is in "PARK" if the PKILL feature has been connected. To test the siren tones the vehicle must not be in "PARK". The following assumes that PKILL has not been activated.

Switch Operation - Hit-N-Go Mode Selected

Function Selector Switch (Center Knob)

RADIO - In the RADIO position, the audio from the 2-way radio is rebroadcast over the siren speaker. The siren tones (Wail, Yelp, & Hi-Lo) do not operate in this position. In addition, power is routed to the two-way radio via the RPWR pin on the rear panel connector. The EXPWR pin must be wired to the battery positive , and the two-way radio power connected to the RPWR pin.

STANDBY - This is the standby mode. If the **MANUAL** button is depressed , and the vehicle is not in PARK, the Manual wail tone will ramp up until it reaches a peak then ramp down when released. If the **AIR HORN** button is depressed, the Air Horn sound will be produced.

WAIL - This position produces the Wail tone. Depressing the MANUAL button or activating the remote input will now produce the Yelp tone for 7 seconds. Depressing the AIR HORN button will produce the Air Horn sound and when released will return siren to Wail tone.

YELP - This position produces the Yelp tone. Pushing the MANUAL button or activating the remote input will now produce the HyperYelp tone for 7 seconds. If the AIRHORN button is pushed, the Airhorn sound will be produced and when released will return the siren to Yelp.

HI-LO - This position produces the Hi-Lo tone. Pushing the MANUAL button or activating the remote input will now produce the HyperLo tone for 7 seconds. If the AIRHORN button is pushed, the Airhorn sound will be produced and when released will return siren to Hi-Lo.

Push-to-Talk (PTT) Microphone Switch - Keying the microphone will automatically override whatever mode the siren is in and broadcast public address messages over the siren speaker. PTT operates in all positions of the Selector switch.

MANUAL Pushbutton Momentary Switch -Has no effect when the selector switch is in RADIO, produces the effects described above for each selector position.

AIR HORN Pushbutton Momentary Switch- Produces the Air Horn tone in all selector switch settings except RADIO.

SLIDE SWITCH - The slide switch located between the AIR HORN and MANUAL buttons selects the function for the REMOTE (external switch) circuitry. When the switch is to the right, the Horn Ring circuitry remotely "depresses" the AIR HORN button and it produces the effects outlined above. When the slide switch is to the left, it allows the REMOTE circuitry to remotely "depress" the MANUAL pushbutton. This causes the effects described above to occur.

Switch Operation - Scroll Mode Selected

The " Scroll " mode is designed to allow the user to scroll through all the tones including Airhorn by utilizing the Remote input on the siren. This will usually be connected to the vehicle Horn Ring circuit. When the siren selector switch is placed in either Wail or Yelp (and Horn Ring transfer has occurred) the user can use the Horn Ring to sequence through Wail,HyperYelp and Yelp by applying a quick, sharp tap on the horn. Additional taps will scroll the siren to the next tone. Depressing the horn ring for longer periods will produce " Airhorn". After releasing the vehicle's horn ring, the siren will return to the selected tone.

Function Selector Switch (Center Knob)

RADIO - In the RADIO position, the audio from the 2-way radio is rebroadcast over the siren speaker. The siren tones (Wail, Yelp, & Hi-Lo) do not operate in this position. In addition, power is routed to the two-way radio via the RPWR pin on the rear panel connector. The EXPWR pin must be wired to the battery positive , and the two-way radio power connected to the RPWR pin.

STANDBY - This is the standby mode. If the **MANUAL** button is depressed the Manual wail tone will ramp up until it reaches a peak then ramp down when released. If the **AIR HORN** button is depressed, the Air Horn sound will be produced. The siren cannot be scrolled in this position.

WAIL - This position produces the Wail tone. Depressing the MANUAL button will now produce Manual wail tone and ramp up until released. Depressing the AIR HORN button will produce the Air Horn sound. The siren can be scrolled in this position as described above.

YELP - This position produces the Yelp tone. Pushing the MANUAL button will now produce the Manual wail tone and ramp up until released. If the AIRHORN button is pushed, the Airhorn sound will be produced. The siren can be scrolled from this position as described above.

HI-LO - This position produces the Hi-Lo tone. Pushing the MANUAL button will now produce the HyperLo tone for 7 seconds. If the AIRHORN button is pushed, the Airhorn sound will be produced and when released will return siren to Hi-Lo. The siren cannot be scrolled from this position.

Push-to-Talk (PTT) Microphone Switch - Keying the microphone will automatically override whatever mode the siren is in and broadcast public address messages over the siren speaker. PTT operates in all positions of the Selector switch.

MANUAL Pushbutton Momentary Switch - Has no effect when the selector switch is in RADIO, produces the effects described above for each selector position.

AIR HORN Pushbutton Momentary Switch - Produces the Air Horn tone in all selector switch settings except RADIO.

SLIDE SWITCH - The slide switch located between the AIR HORN and MANUAL buttons selects the function for the REMOTE (external switch) circuitry. **When in the "Scroll " mode this switch has no effect unless in STANDBY or the Hi-Lo position. When this is the case the switch functions as follows:**

When the switch is to the right, the Horn Ring circuitry remotely "depresses" the AIR HORN button and it produces the effects outlined above. When the slide switch is to the left, it allows the REMOTE circuitry to remotely "depress" the MANUAL pushbutton. This causes the effects described above to occur.

LED STATUS INDICATOR - The green LED status indicator indicates the siren is on when lighted. The LED will remain off unless a siren tone or air horn or PA or radio output is selected.

-For 'L4 & 'L6 Models Only-

WARNING LIGHTS 3 LEVEL PROGRESSIVE SLIDE SWITCH:

POSITION 1 - Supplies power to Lighting Level 1, illuminates Green LED and activates LightAlert if supplied.

POSITION 2 - Supplies power to Lighting Levels 1 & 2. illuminates Green & Yellow LED's and activates LightAlert and SirenLock options if supplied.

POSITION 3 - Supplies power to Lighting Levels 1,2, & 3. Illuminates Green, Yellow, and Red LED's; and activates LightAlert and SirenLock if supplied.

Auxiliary Switches:

AUXILIARY SWITCH "A" - Supplies power to the load connected to terminal SW A.

AUXILIARY SWITCH "B" - Supplies power to the load connected to terminal SW B.

AUXILIARY SWITCH "C" - Operates circuit connected to terminals SWC NO, SWC NC, SWC COM. Optional functions a momentary activation or a 5 sec. timed switch.

AUXILIARY SWITCH "D" - Supplies power to the load connected to terminal SW D.

-For 'L6 Models Only-

AUXILIARY SWITCH "E" - Supplies power to the load connected to terminal SW E.

AUXILIARY SWITCH "F" - Supplies power to the load connected to terminal SW F.

NOTE: All switches have their own individual LED indicating that the circuit is On. All switches will activate the LightAlert feature if it is supplied.

LightAlert - The LightAlert option will produce an audible "beep" on a periodic basis if the Warning Light Switch or any of the Auxiliary Switches are on. A rear accessible circuit board mounted DIP switch is provided to defeat this option.

SirenLock - The SirenLock, when not defeated by means of a rear panel accessible switch, allows siren tones (Wail, Yelp, and Hi-Lo) to be produced only when the Warning Light Switch is in the Lighting Level 2 (Green and Yellow LED's) or Lighting Level 3 (Green, Yellow, and Red LED's) position (switch selectable via a rear panel accessible switch). Air Horn, Radio Rebroadcast, and Public Address are unaffected by this option.

MAINTENANCE

Your Code 3® 3890 series siren has been designed to provide trouble free service. In case of difficulty, see Troubleshooting (page 14,15). Also check for shorted or open wires. The primary cause of short circuits has been found to be wires passing through firewalls, roofs, etc. If further difficulty persists, contact the factory for troubleshooting advice or return instructions. Public Safety Equipment, Inc. maintains a complete parts inventory and service facility at the factory and will repair or replace (at the factory's option) any unit found to be defective under normal use and in warranty. Any attempt to service a unit in warranty by anyone else other than a factory authorized technician without express written consent by the factory, will void the warranty.

Units out of warranty can be repaired at the factory for a nominal charge on either a flat rate or parts and labor basis. Contact the factory for details and return instructions. Public Safety Equipment, Inc. is not liable for any incidental charges related to the repair or replacement of a unit unless otherwise expressly agreed to in writing by the factory.

TROUBLESHOOTING

(Refer to wiring diagram page 20)

PROBLEM	PROBABLE CAUSE	REMEDY
NO SIREN OUTPUT.	A. PARKKILL ENGAGED B. SIRENLOCK EXGUAGED C. SHORTED SPEAKER OR SPEAKER WIRES. SIREN IN OVER CURRENT PROTECTION MODE.	A. DISENGAGE PARKKILL B. SELECT LEVEL 3 LIGHTING C. CHECK CONNECTIONS
INTERNAL OR EXTERNAL 10AOR 20A OPTION FUSE BLOWS.	A. AMPLIFIER POWER WIRES REVERSED POLARITY B. 200W LOAD CONNECTED TO 100W UNIT FOR 10 AMP FUSE	A. CHECK POLARITY B. REMOVE ONE SPEAKER ON 100W UNIT.
NO OUTPUT FROM SPEAKER, TONES HEARD INSIDE AMP. MODULE.	A. SPEAKER NOT CONNECTED/ OPEN CIRCUIT IN SPEAKER WIRING B. DEFECTIVE SPEAKER(S)	A. CHECK SPEAKER WIRING B. REPLACE SPEAKER(S)
SIREN TONES VOLUME TOO LOW/GARBLED.	A. LOW VOLTAGE TO SIREN AMPLIFIER B. HIGH RESISTANCE IN WIRING/ DEFECTIVE SPEAKER C. SPEAKERS PHASED IMPROPERLY (200W OPTION)	A. CHECK WIRING FOR BAD CONNECTIONS/ CHECK VEHICLE CHARGING SYSTEM B. CHECK SPEAKER(S) WIRING/REPLACE SPEAKER(S) C. REFER TO PAGE 6 FOR PROPER PHASING
HIGH RATE OF SPEAKER FAILURE.	A. HIGH VOLTAGE TO SIREN B. 58 WATT SPEAKER CONNECTED TO 100 WATT TAP. 58 WATT NOT ALLOWED.	A. CHECK VEHICLE CHARGING SYSTEM B. USE CORRECT SPEAKER
SIREN CONTINUES TO OPERATE FOR 7 SEC. AFTER MANUAL BUTTON/ HORN RING IS RELEASED.	A. "HIT-N-GO" FEATURE ENGAGED. NORMAL OPERATION	
INTERCLEAR WILL NOT POWER AUXILIARY DEVICES. IF OPTION IS INSTALLED.	A. THERE IS A SHORT IN THE WIRING, OR THE LOAD IS GREATER THAN 1 A.	A. CHECK FOR SHORTS. INSTALL INTERCLEAR BOOSTER KIT (PART #INTBS)
P.A. VOLUME LOW OR NO P.A. AT ALL. VOLUME CONTROL FULLY CLOCKWISE.	A. DEFECTIVE MICROPHONE B. MAXIMUM P.A. VOLUME TRIMMER MISADJUSTED. SEE SET-UP AND ADJUSTMENT SECTION. C. MICROPHONE NOT COMPLETELY PLUGGED IN. D. COMMON MICROPHONE CIRCUIT NOT PROPERLY WIRED. E. INCORRECT MICROPHONE.	A. REPLACE MICROPHONE B. REFER TO SET-UP AND ADJUSTMENT SECTION C. PLUG MICROPHONE IN SECURELY D. CHECK WIRING

TROUBLESHOOTING

(Refer to wiring diagram page 20)

PROBLEM	PROBABLE CAUSE	REMEDY
RRB VOLUME LOW, OR NO RRB AT ALL. VOLUME CONTROL FULLY CLOCKWISE.	A. MAXIMUM RADIO REBROADCAST TRIMMER MIS-ADJUSTED B. RRB WIRES NOT CONNECTED TO TWO-WAY RADIO EXTERNAL SPEAKER	A. REFER TO SET-UP AND ADJUSTMENT SECTION B. CHECK RRB CONNECTIONS
SIREN SOUNDS BY ITSELF	A. REMOTE SWITCH (HORN RING) WIRING FROM TERMINAL REMOTE SHORTING TO POSITIVE OR TO GROUND (EARTH).	A. CHECK WIRING FOR ANY SHORTING.
POWER DISTRIBUTION SECTION NOT WORKING	A. SUPPLY FUSE OPEN B. SIREN NEGATIVE TERMINAL NOT GROUNDED	A. REPLACE FUSE. B. RECONNECT NEGATIVE TERMINAL TO GROUND.
SIREN RUNS PROPERLY BUT SHUTS DOWN WHILE RUNNING, THEN STARTS RUNNING AGAIN AFTER A FEW MINUTES	A. VEHICLE CIRCUIT BREAKERS NOT RATED PROPERLY, AND ARE OVERHEATING, OR ARE NOT FUNCTIONING PROPERLY	A. REFER TO SPECIFICATIONS SECTION, PAGE 18. USE A BREAKER WITH 1.25x THE AMPERAGE RATING FOR THE WATTAGE BEING USED.

Parts List

<u>Ref No.</u>	<u>Description (SEE FIGURE 4 PAGE 19)</u>	<u>Part No.</u>	<u>Qty.</u>
1	#6 x 1/2, Pan Hd Phil, Sheet Metal Screw	T02797	8
2	Bezel	T03542	1
3	#4 - 40 x 3/8", Pan Hd. Phil., Machine Screw	T06937	2
4	Selector Knob	T03537	1
5	Selector Knob Insert	T03538	1
6	#4 - 40 x 3/8, Flat Hd Phil., Machine Screw	T01011	2
7	Switch Knob	T01917	1
8	Molded Guide	T01916	1
9	Faceplate Label -		1
	Model 3892	T06997	
	Model 3892L4	T06996	
	Model 3892L6	T06995	
10	Faceplate	T08657	1
11	Horizontal Rotary Switch	T01116	1
12	Volume Control Knob	T03536	1
13	3/8 - 32 x 1/2 x .090" Nut	T01082	2
14	Custom Label Window	T03539	
	Models 3892L4		2
	Models 3892L6		3
15	Strain Relief	T07310	1
	Models 3892, 3892L4, 3892L6		
16	Microphone Wired	T07311	1
	Models, 3892, 3892L4, 3892L6		
17	Microphone, Plug-in	T07309	1

18	Fish Paper Gasket	T01363	4
19	Spacer	T08659	1
20	Transistor Insulating Pad	T06363	2
21	#4 - 40 Nylon Insert Stop Nut	T03594	2
22	Microphone Jack (Option)	T06147	1
23	Siren Amp. Circuit Board	T50002	1
	Models 3892, 3892L4, 3892L6		
24	Circuit Board Standoff	T05172	4
25	#6 - 32 Rd Hd Phil., Machine Screw	T01030	4
26	Lamp, Miniature, 14VDC	T10805	1
27	Lighting Pushbutton Actuator	T03540	
	Models 3892L4		6
	Models 3892L6		8
	Model 3892		2
28	Lighting Circuit Board	T50005	1
	Models 3892L4		
29	Lighting Circuit Board	T50004	1
	Models 3892L6		
30	E - Tray Pemserted	T03100	1
31	Tinnerman Clip	T01058	1
32	Label Set	T10859	1
33	Chassis	S55133	1
34	Mounting Bail	T08660	1
35	Acorn Nut	T00183	4
36	#8 - 32 x 5/8, Hex Hd, Machine Screw	T00763	1
37	Backplate		1

	Model 3892	S71332	
	Model 3892L4	S71328	
	Model 3892L6	T08658	
38	Airbag Warning Label	T09937	1
39	1/4 Internal Tooth Star Lock Washer	T06935	4
40	#12 Flat Washer	T01295	4
41	C - Bolt, 1/4 - 20	T06138	4
42	Internal Harness	T10920	1
43	#6 x 3/8 Hex Hd, Sheet Metal Screw	T01031	1
44	Fuse, Blade Type Term., 10A	T06313	1
	Fuse, Blade Type Term., 20A	T01031	1
45	#8 - 32 Kep Nut	T00674	2

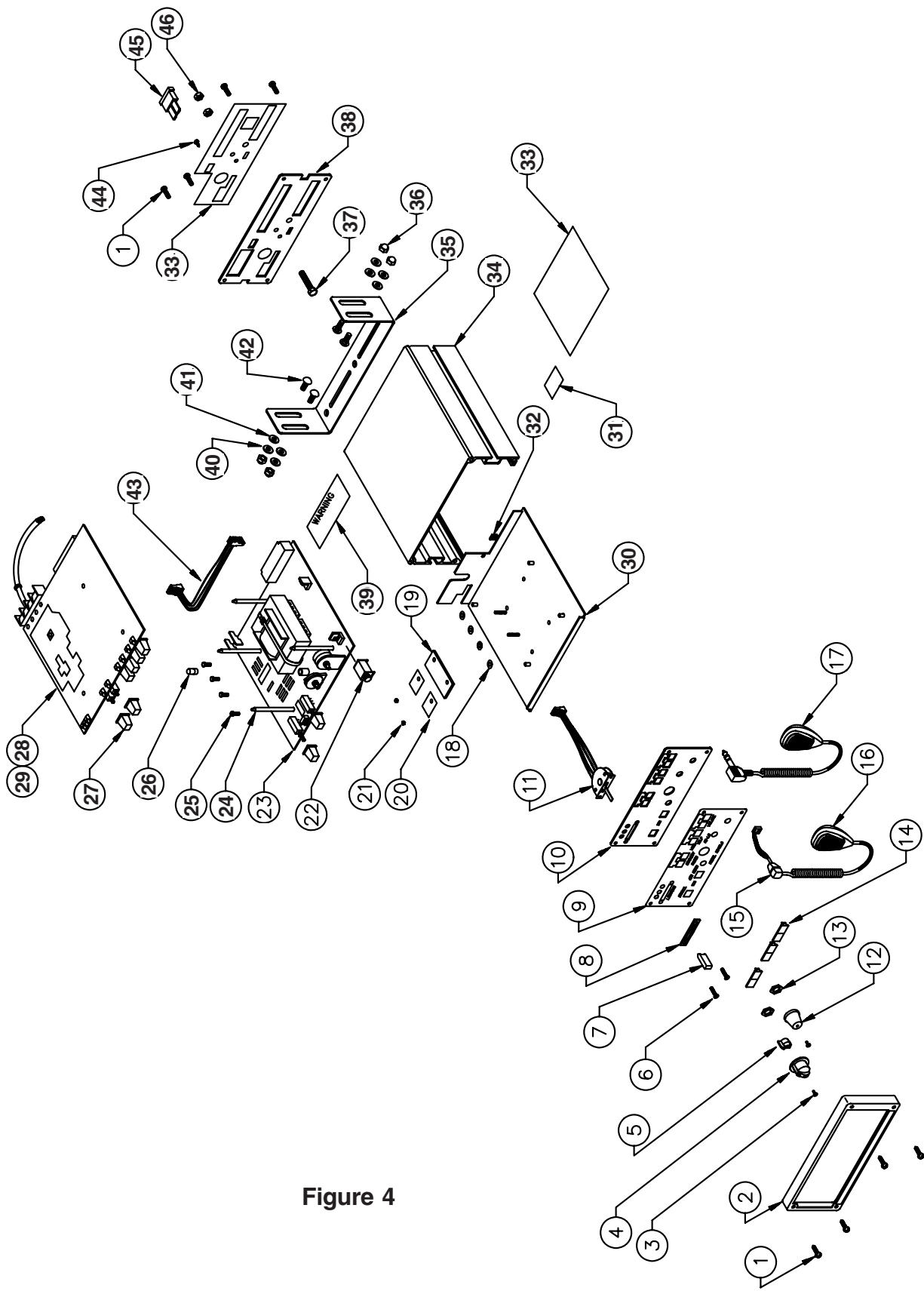


Figure 4

Installer: Please record model number and serial number on page 25.
 For technical assistance see page 25.

FOR PROPER CONNECTIONS TO THE
 GREEN PLUGS SEE PAGES 5 TO 8

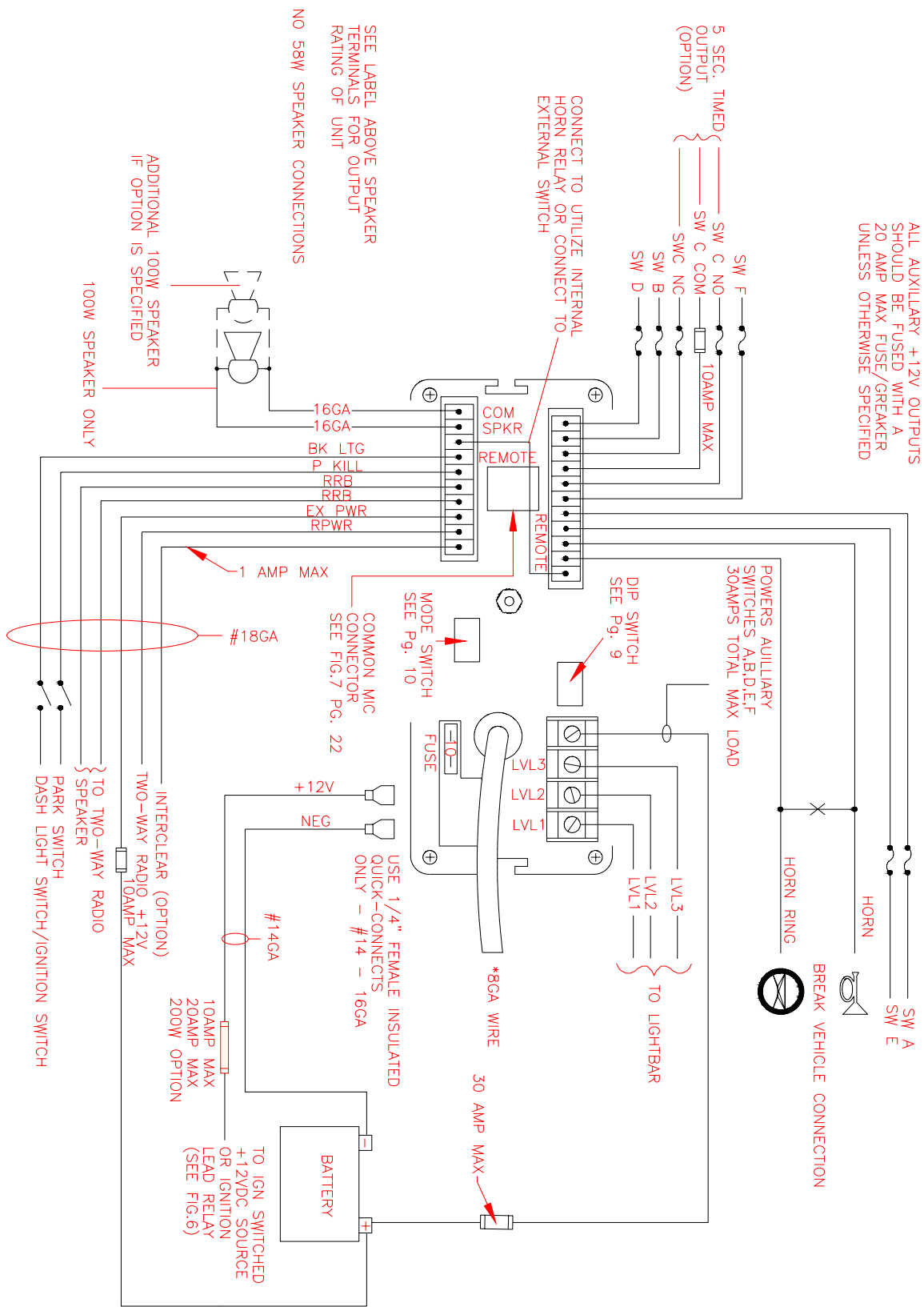


Figure 4

External Ignition Lead Relay for **MASTERCOM** 3890 Series Siren Systems

DESCRIPTION:

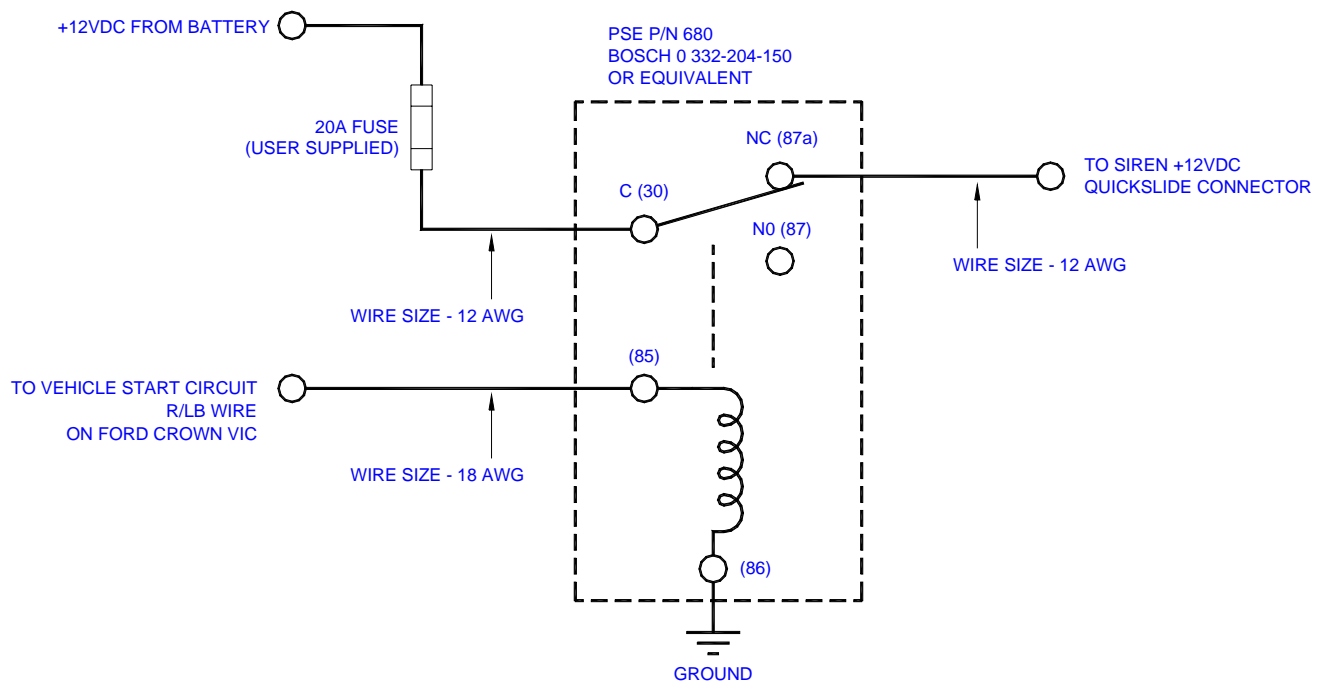
Normal installation procedure requires the siren's +12VDC power connection to be connected to the vehicle's ignition circuit so that the ignition key must be in the on position for the system to operate. In cases where vehicle security is a consideration it may be desirable to connect the siren system directly to the vehicle's battery in order to allow the siren and lighting control to be operated with the vehicle's ignition switch in the off position. This requires that the siren's +12VDC power connection be routed through the normally closed (NC) contacts of a SPDT relay (user supplied). This is easily accomplished using the wiring method described below.

OPERATION:

Refer to the appropriate user instruction manual for details on the configuration and operation of the MasterCOM Siren System.

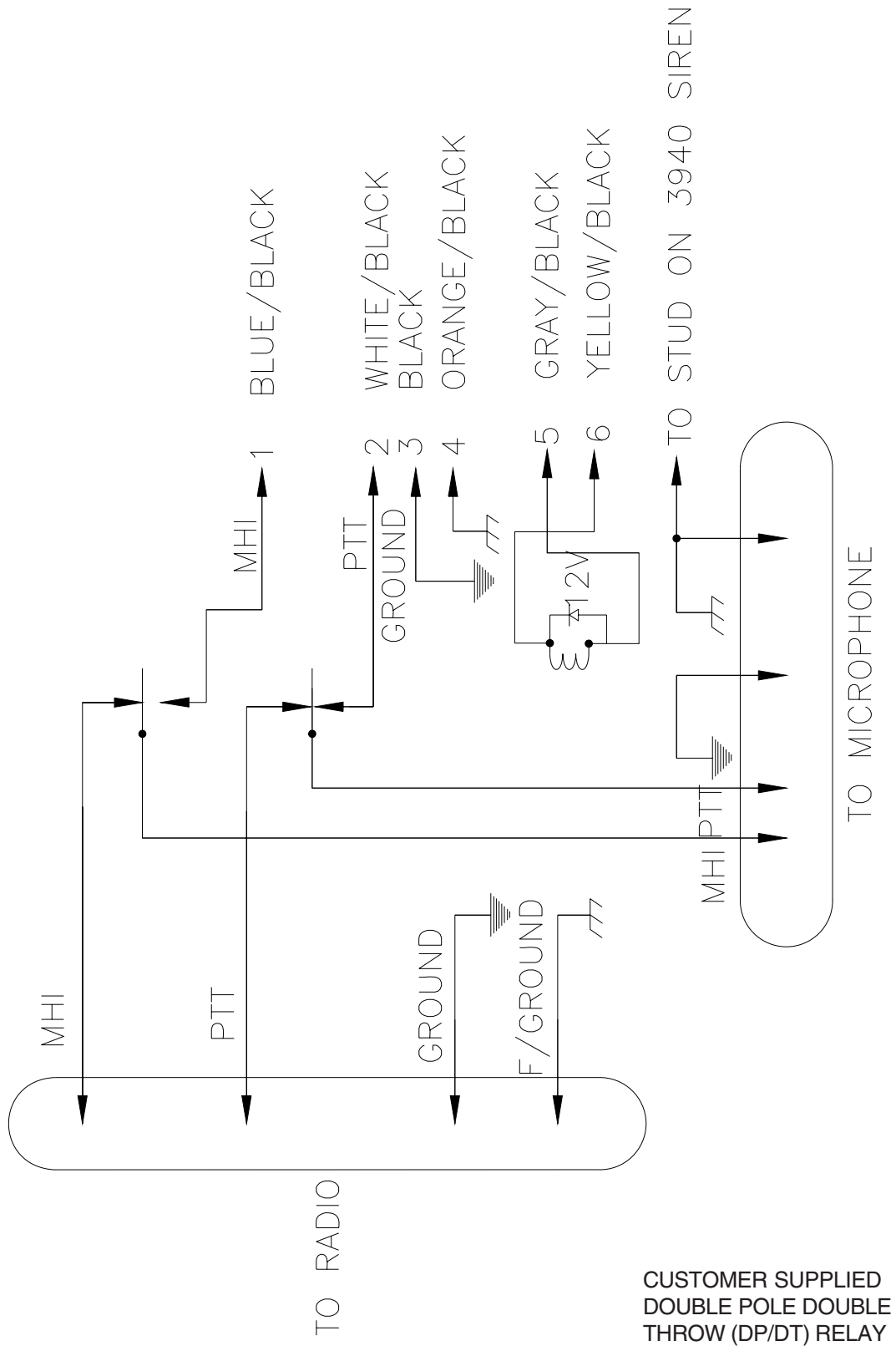
WIRING:

The basic connections are shown in Fig. 1 below. Please note that other equivalent relays and vehicles of different makes and models may require slightly different connections. Mount and wire the siren amplifier in compliance with the instructions in the user manual. Read and comply with all safety warnings. Refer to the vehicle manufacturer's wiring diagram to determine the location and wire color of the start circuit. Securely mount the external relay. Use the appropriate wire size as indicated in Fig. 1, and insure that all wiring is properly terminated and secured in a manner that does not interfere with other systems within the vehicle.



External relay wiring to allow electronic siren
and lighting control to operate directly from
vehicle battery (vehicle ignition OFF) and
provide ignition reset to siren during vehicle restart.

Fig. 6



COMMON MIC OPTION
FIGURE 7

Options

Lighting Switch Connector- Connectors which when soldered to the #8 wire and the user supplied power wire offers quick disconnect service.

200W Speaker Output - An optional 200 watt version is available. This enables the user to connect two 100w speakers in parallel.

No HI-Low Siren Tones - "wail" and "yelp" tones are in some cases (such as in the state of California) the only recognized siren tones for calling for the right of way.

Instant Yelp - This product is provided with an INSTANT YELP feature which allows the user to select the YELP tone instantly by depressing the vehicles's horn switch.

Remote MIC Jack - A plug-in microphone jack in lieu of the standard wired-in microphone may be specified. A plug-in noise-canceling microphone (p/n T07309) must be ordered separately if needed.

LightAlert™ (L4 and L6 Models Only)- An audible alarm pulse that indicates that either the primary warning system or one of the auxiliary control circuits is on. User defeatable.

InterClear® This unique feature can be used to activate additional warning lights for 7 seconds when in an Hit-N-Go override or "scrolling" by pushing a single button or the vehicle horn ring, thus allowing an additional level of warning in situations such as intersections without the operator having to take his hands off the wheel or his eyes off the road.

InterClear Booster Kit (part#intbs) Increases interclear option's output capability for loads greater than 1 amp.

Custom Engraving (CUSENG) - The lower portion of the faceplate can be engraved with department name or other information.

Air Horn only - This option disables the primary and secondary siren tones while still enabling the Air horn tone, Radio Rebroadcast and PA outputs. The primary warning and auxiliary lighting controls remain unaffected.

Specifications

Siren Section

Input Voltage - 10 to 16 VDC, negative ground (earth).
(Note: Operation above 15 VDC for an extended period of time may result in speaker damage.)

Operating Current: 8 Amps @ 13.6V with 11-ohm load (100 W Spkr)

For optional 200 Watt operation: 14 Amps @ 13.6V with 5.5-ohm load (2- 100 W Spkr)

Note: There is no 58 Watt speaker connection available.

Standby Current: 12 mA excluding backlighting

Cycle Rate: WAIL - 11 cycles/minute.
YELP - 200 cycles/minute.

Voltage Output (approx.) 64 V peak-to-peak

Audio Section

Audio Response: 3 dB down points - 500 to 3000 hz.
1000 hz. 0 dB Reference

Audio Distortion: 10% or less below clipping.

Lighting Section ("L" Models Only)

Warning Light Control: Progressive switching, 3 levels

50 Amps. maximum combined total to #8 wire
Audible alarm (optional).

Level 1 30A maximum
Green LED Indication

Level 2 30A maximum
Yellow LED Indication

Level 3 30A maximum
Red LED indication.

Auxiliary Control - SPST (Aux. Switches A, B,C,D,E, F)

Accessory Switch operation - Push-on/off convertible to momentary operation.
Independent circuits - 4 ('L4), 6 ('L6).
30 Amps. maximum combined total
20 Amps. maximum load for any single output A,B,C,D,E or F
Green LED indication.
Audible alarm (optional).

Horn Transfer Relay - SPDT:

Activated in Level 2 or Levels 2 & 3 (User selectable).
10 Amps. maximum connected load.

For Technical assistance phone (314) 426-2700 and then press option 2 when you hear the recording.
For Technical Service direct FAX (314) 429-2962.
or www.code3pse.com
Please have model number and the serial number of the unit handy before calling.

Model number 394_L_ Serial Number _____

NOTES:

WARRANTY

Code 3, Inc.'s emergency devices are tested and found to be operational at the time of manufacture. Provided they are installed and operated in accordance with manufacturer's recommendations, Code 3, Inc. guarantees all parts and components except the lamps to a period of 1 year (unless otherwise expressed) from the date of purchase or delivery, whichever is later. Units demonstrated to be defective within the warranty period will be repaired or replaced at the factory service center at no cost.

Use of lamp or other electrical load of a wattage higher than installed or recommended by the factory, or use of inappropriate or inadequate wiring or circuit protection causes this warranty to become void. Failure or destruction of the product resulting from abuse or unusual use and/or accidents is not covered by this warranty. Code 3, Inc. shall in no way be liable for other damages including consequential, indirect or special damages whether loss is due to negligence or breach of warranty.

CODE 3, INC. MAKES NO OTHER EXPRESS OR IMPLIED WARRANTY INCLUDING, WITHOUT LIMITATION, WARRANTIES OF FITNESS OR MERCHANTABILITY, WITH RESPECT TO THIS PRODUCT.

PRODUCT RETURNS

If a product must be returned for repair or replacement*, please contact our factory to obtain a Return Goods Authorization Number (RGA number) before you ship the product to Code 3, Inc. Write the RGA number clearly on the package near the mailing label. Be sure you use sufficient packing materials to avoid damage to the product being returned while in transit.

*Code 3, Inc. reserves the right to repair or replace at its discretion. Code 3, Inc. assumes no responsibility or liability for expenses incurred for the removal and /or reinstallation of products requiring service and/or repair.; nor for the packaging, handling, and shipping; nor for the handling of products return to sender after the service has been rendered.

PROBLEMS OR QUESTIONS? CALL OUR TECHNICAL ASSISTANCE HOTLINE (314) 996-2800

Code 3, Inc., a subsidiary of
Public Safety Equipment, Inc.

CODE 3[®]
PUBLIC SAFETY EQUIPMENT, INC.

Public Safety Equipment, Inc.
10986 N. Warson Road
St. Louis, Missouri 63114-2029—USA
Ph. (314) 426-2700 Fax (314) 426-1337
www.code3pse.com