

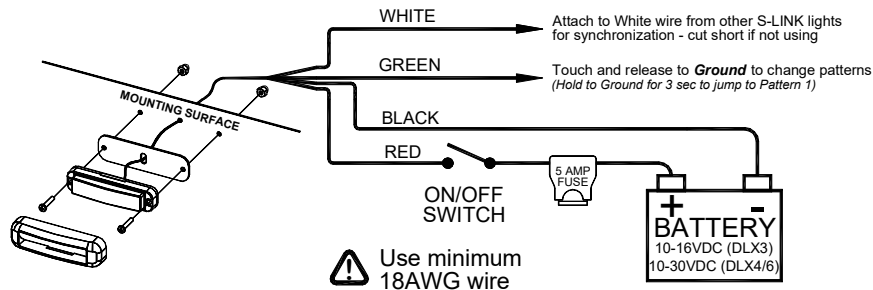
DLX3 / DLX4 / DLX6 / DLX6F

VERSA STAR™

S-LINK SYSTEM

IMPORTANT: Please read all of the following instructions before installing your new light. Failure to follow these safety precautions may result in damage to your light or vehicle and may result in serious injury or death to you and your passengers.

Quick Install Guide



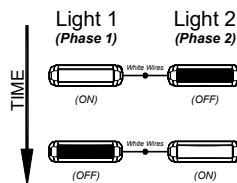
SYNCHRONIZATION

You can synchronize up to six lights with **S-LINK SYSTEM** compatibility.

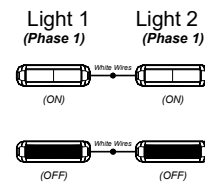
DO NOT CONNECT WHITE WIRES UNTIL PROGRAMMING HAS BEEN COMPLETED FOR ALL LIGHTS!!

- Power up the first unit and select a Phase 1 pattern. Touch and release the green wire to ground to change patterns.
- Program the second light with the same **Pattern Type**.
Lights with the SAME phase flash together (simultaneous).
Lights with DIFFERENT phases flash opposite one another (alternate).
- After programming all lights, tie off the green wires and connect the white wires together.
- Test lights by applying power to all of them at the same time.

Alternating Pattern (Programmed for opposite Phases)



Simultaneous Pattern (Programmed for same Phase)



Phase 1 Flash Pattern	Phase 2 Flash Pattern	Pattern Type	S-LINK SYSTEM Pattern Description	Shortcut
1	13	K	Flicker	← Pattern 1 (Phase 1): 3 sec or 1 flash
2	14	L	Fast Doubleflash	
3	15	M	Tripleflash	
4	16	N	PSU Flicker (default)	← Pattern 13 (Phase 2): 9 sec or 3 flashes
5	17	O	PSU Random	
6	18	F	Quadflash †	← Pattern 6 (Phase 1): 6 Sec or 2 flash Pattern 18 (Phase 2): 12 sec or 4 flashes
7	19	G	Quadflash w/Post-Pop †	
8	20	H	Singleflash †	
9	21	I	Doubleflash †	
10	22	J	Variable AKA Delta-Omega	
11	23	C	Post Pop	← Pattern 18 (Phase 2): 12 sec or 4 flashes
12	24	E	Random	
NA			Steady	18Sec

† - SAE J595 and California Title 13 approved patterns

Pattern Shortcuts: Hold Green wire to ground for indicated time.

Split Mode Phases: One side flashes in Phase 1, the other side flashes in Phase 2

Steady Burn: Not in pattern cycle. Only accessible through shortcut. Hold Green wire to ground for 18 seconds (light will flash 6 times).

Installation Notes

- Installer must have firm knowledge of vehicle electrical systems & emergency equipment. **It is the sole responsibility of the installer to ensure the warning light is secure. The manufacturer assumes no responsibility for the secure mounting of this light.**
- If you need to drill any holes when installing this light, please take care to check that BOTH SIDES of your drilling surface are clear from obstructions.
- Choose a mounting location away from any air bag deployment areas.
- Controls should be placed within convenient reach of the driver.
- Use only soap and water when cleaning product. Use of other chemicals may discolor lens and/or housing, diminishing light output. Replace discolored lenses immediately!

Wiring Notes



When wiring your lights, it is recommended that you take the following precautions to reduce any Electromagnetic Interference (EMI).

- Keep LED modules and any radios as far away from each other as possible.
- Separate the radio wires and the LED wires.
- Any excess wires should be cut short.
- The Ground wire, Power wire, and Synchronization wire should be bound tightly together as they run from light to light, through your switchbox, and to the battery.
- Do not ground each unit independently to the chassis. Run the ground for each unit in a "bus" like structure, to the negative terminal on the battery.

Note: The total wire length between the two farthest units should be no more than 40 feet.

Steady Burn Programming

1. Power the light up: Red to power
Black to ground
2. Touch and hold the Green wire to Ground until the light blinks 6 times (approximately 18 seconds), then release it.
For *single color lights*, the entire light should illuminate steady burn.
For *dual color lights*, one of the two halves will become steady, while the other flashes.
 - To change the pattern on the flashing side, touch and release the Green wire to Ground.
 - To flip-flop the steady side and the flashing sides, hold the Green wire to Ground until the light flashes 5 times (approximately 15 seconds) and then release it.
3. To exit Steady burn pattern: **Single Color Lights** - Touch and release the Green wire to Ground.
Dual Color Lights - Touch and hold the Green wire to Ground until the light blinks six times (approximately 18 seconds).

VERSA STAR™

Solid/Split Mode Programming

Single color lights come programmed for Solid mode (entire light flashes together). Two color lights come programmed for Split Mode (two halves of the light flash back and forth). If you wish to change the mode, proceed below.

1. Connect the Black and Green Wire to Ground
2. Connect the Red and White wire to power.
3. Single Color Lights : **Solid Mode** - Release the Green wire after the light flashes once.
Split Mode - Release the Green wire after four flashes.

Two Color Lights : **Split Mode** - Release the Green wire after the light flashes once.
Solid Mode - Release the Green wire after four flashes.

Surface Mounting Instructions (DLX3, DLX4, and DLX6F Only)

Review the mounting diagram under the Quick-Install Section.

- Use the self tapping screws for applications where the mounting surface is a minimum of .060" (1/16") thick and is composed of a material that will provide sufficient "bite" for the self tapping screw.
- Use the machine screws and well nuts if your surface is less than .060" thick and/or composed of a material insufficient for securing a self tapping screws.

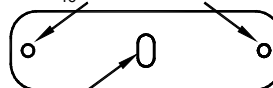
**⚠ DO NOT OVER TIGHTEN SCREWS!!!
TORQUE TO 10 IN.-LBS.!!!**

Once the wires are run, the use of a small amount of silicone or other similar sealant (not included) is recommended to seal the wire hole and prevent your wires from becoming damaged.

Rubber Mounting Gasket (P30047-136)

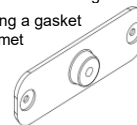
Mark Screw Holes

- Drill 1/8" Holes for Self Tapping Screws
- Drill 5/16" Holes if Using Rubber Well Nuts

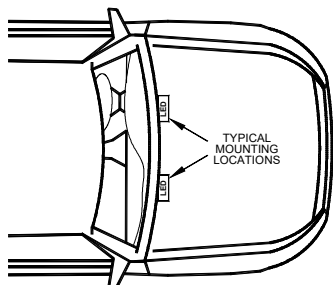


Mark Wire Hole

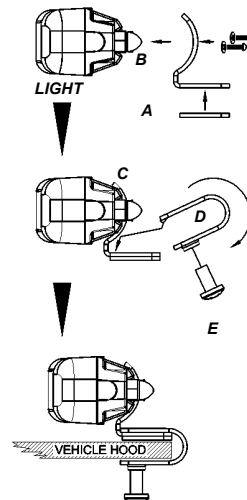
- Drill 3/8" Hole to Route Wires Through
- Drill 11/16" hole if using a gasket with a built-in grommet (P30047-172).



Hood Clamp Mounting Instructions (DLX6 Only)



1. Affix the rubber pad (A) to the L-bracket (B).
2. Attach the L-bracket to the light using the two screws and washers (C).
3. Install screw E onto bracket D and assemble as shown above.
4. Once installed, have someone stand 20 feet in front of the vehicle to view the lights. Adjust them as needed and fully tighten the three Phillips head screws on each light.



LED FIVE YEAR LIMITED WARRANTY

The manufacturer warrants this LED light against factory defects in material and workmanship for five years after the date of purchase. The owner will be responsible for returning to the Service Center any defective item(s) with the transportation costs prepaid. The manufacturer will, without charge, repair or replace *at its option*, products, or part(s), which its inspection determines to be defective. Repaired or replacement item(s) will be returned to the purchaser with transportation costs prepaid from the service point. A copy of the purchaser's receipt must be returned with the defective item(s) in order to qualify for the warranty coverage. Exclusions from this warranty include, but are not limited to, domes, and/or the finish. This warranty shall not apply to any light, which has been altered, such that in the manufacturer's judgment, the performance or reliability has been affected, or if any damage has resulted from abnormal use or service.

There are no warranties expressed or implied (including any warranty of merchantability or fitness), which extend this warranty period. **The loss of use of the product, loss of time, inconvenience, commercial loss or consequential damages, including costs of any labor, are not covered.** The manufacturer reserves the right to change the design of the product without assuming any obligation to modify any product previously manufactured.

This warranty gives you specific legal rights. You might also have additional rights that may vary from state to state. Some states do not allow limitations on how long an implied warranty lasts. Some states do not allow the exclusion or limitation of incidental or consequential damages. Therefore, the above limitation(s) or exclusion(s) may not apply to you.

If you have any questions concerning this or any other product, please contact our **Customer Service Department** at (585) 226-9787.

If a product must be returned for any reason, please contact our Customer Service Department to obtain a Returned Material Authorization number (RMA #) before you ship the product back. Please write the RMA # clearly on the package near the mailing label.



PROUDLY MADE IN THE USA
An ISO 9001:2008 Certified Company

NOTICE

Due to continuous product improvements, we must reserve the right to change any specifications and information, contained in this manual at any time without notice. Star Headlight & Lantern Co., Inc. makes no warranty of any kind with regard to this manual, including, but not limited to, the implied warranties of merchantability and fitness for a particular purpose. Star Headlight & Lantern Co., Inc. shall not be liable for errors contained herein or for incidental or consequential damages in connection with the furnishing, performance, or use of this manual.

 **Star Headlight & Lantern Co., Inc.**
455 Rochester Street Avon, NY 14414 Phone: 585-226-9787 FAX: 888-478-2797
STAR **STAR** **STAR** **BRADFORD** www.starheadlight.com
SINCE 1889 **WARNING SYSTEMS** **SIGNAL** **VEHICLE PRODUCTS** **Vehicle Solutions**

VERSA STAR™