

FIRE / EMS

# COMMAND

Division by **ROCKLAND**  
CUSTOM PRODUCTS™



10 Commerce Drive, Hauppauge, NY 11788 • 631-391-6007 • Fax 631-206-2923  
[www.rocklandcustomproducts.com](http://www.rocklandcustomproducts.com)

©2016 Rockland Custom Products and Rockland Custom Cabinets are registered trademarks of their subsidiaries.





# SCBA Command Cabinets



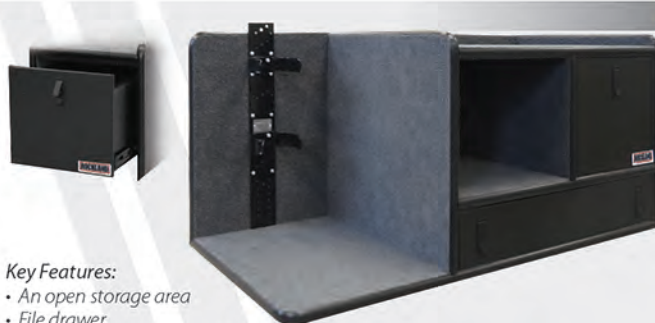
SCBA-1



**Key Features:**

- 3 open storage areas
- File drawer
- Low mounted command board
- SCBA bracket

Fits: **SUV**



SCBA-2



**Key Features:**

- An open storage area
- File drawer
- Low mounted command board
- SCBA bracket

Fits: **SUV**



SCBA-3



**Key Features:**

- 3 open storage areas
- File drawer
- Mid mounted command board
- SCBA bracket

Fits: **SUV**



SCBA-4



**Key Features:**

- 2 open storage areas
- File drawer
- Low mounted command board
- Parts drawer
- SCBA bracket

*\*Shown with Gunmetal Lonsel™ and ratcheting command board upgrades*

Fits: **SUV**



SCBA-5



**Key Features:**

- File drawer
- An open storage area
- Parts drawer
- Mid mounted command board
- 2 compartments for extra SCBA bottles
- SCBA bracket

Fits: **SUV**



SCBA-6



**Key Features:**

- File drawer
- 3 open storage areas
- Parts drawer
- 2 adjustable shelves
- Slide-out / pop-up SCBA bracket
- Low mounted ratcheting command board

Fits: **SUV**



SCBA-7



**Key Features:**

- An open storage area with pull tray
- File drawer
- Low mounted ratcheting command board
- Full length parts drawer
- Slide out SCBA bracket



*\*Shown with Lonsel™ upgrade*

Fits: **SUV**





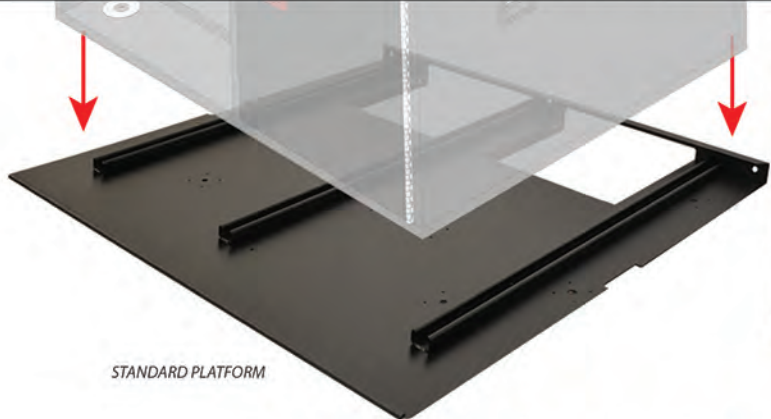
Rockland Custom Products provides Firefighters and Departments with custom ways of storing gear and equipment in an open compartment cabinet or through the versatility of command cabinets featuring lighting and touch screen TV's. Our exclusive Illumi-Grille, along with our rock solid Platform Series, and the NFPA Compliant Gear-Clear System are just a few new products we developed to ensure Firefighter safety. We are always on the cutting edge developing and manufacturing products that the Firefighting industry needs and demands. That is the Rockland Difference! All of our products are conceptualized, designed, manufactured and tested here in the United States. Made from the highest quality and the most durable of materials, every product is custom made to meet the lasting needs of our customers, and outlast the life(s) of your vehicles. The entire Rockland line delivers custom, secure, practical, functional, and innovative products at an affordable price.



## NEW PLATFORM SERIES

Securely Mounted | Won't Damage OEM Vehicle Flooring | Cabinet Can Be Removed To Gain Rear Cargo Space

**Built for:**  
Tahoe,  
Expedition  
& Suburban



STANDARD PLATFORM

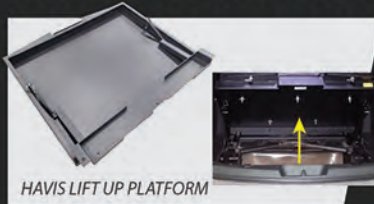


## SAFETY, SECURITY AND STRENGTH

### MORE PLATFORM/MOUNTING OPTIONS



INTERCEPTOR STANDARD PLATFORM



HAVIS LIFT UP PLATFORM



SEDAN CABINET BRACKETS



CABINET BRACKETS

High Quality Products  
Starts With Our  
Manufacturing Process



"See The Rockland Difference."

Contact a Sales Representative: 855-808-2597 or [info@rocklandcustomproducts.com](mailto:info@rocklandcustomproducts.com)





— NEW —



**GEAR**  
**CLEAR** Systems™

***Don't Drive The Fire Around With You!***



**KEY FEATURES**

- Eliminates gear contaminants from entering vehicle
- Keeps gear dry and well-ventilated
- Sealed compression latch
- Reduces safety risks and potential health hazards from airborne contaminants
- Shields gear from direct sunlight
- Built to comply with the NFPA 1851 standard

***You face enough dangers; stop exposing your family and yourself to harmful off-gassing.***



Every time you leave a fire or an emergency scene, your turnout gear retains numerous contaminated and hazardous materials. Keeping your soiled turnout gear in your car for any length of time exposes yourself, family and loved ones to toxins and carcinogens that enter the body through ingestion, inhalation or absorption.



GC-1



**Key Features:**

- Gear Clear Chamber
- Pop-up SCBA Bracket
- Slide-out Command Board

Fits: **SUV**



GC-2



**Key Features:**

- Gear Clear Chamber
- Parts Drawer
- Slide-out Tool Board

Fits: **SUV**



GC-3



**Key Features:**

- Gear Clear Chamber
- SCBA Bracket
- Ratcheting Command Board

Fits: **SUV**



GC-4



**Key Features:**

- Gear Clear Chamber
- Pop-up SCBA Bracket
- Slide-out Magnetic Command Board

Fits: **SUV**



GC-5



**Key Features:**

- Gear Clear Chamber
- Parts Drawer
- Slide-out Command Board

Fits: **SUV**

**GEAR**  
**CLEAR** Systems™



Gear Clear Chamber





CUSTOM PRODUCTS™

# Fire / EMS Command Cabinets



IFC-1



## Key Features:

- 2 parts drawers
- Designed for Ford Utility Interceptor
- Low mounted ratcheting command board
- Open storage area with cargo netting
- Platform included for access to spare tire
- SCBA bracket area covered with Lonseal™ or carpet

Fits: **SUV**



IFC-2



## Key Features:

- 1 parts drawer
- Designed for Ford Utility Interceptor
- Low mounted ratcheting command board
- 2 open storage areas, one with cargo netting
- Platform included for access to spare tire
- SCBA bracket area covered with Lonseal™ or carpet

Fits: **SUV**



CC-1



## Key Features:

- 2 parts drawers
- 1 file drawer
- Low mounted command board
- Storage compartment

Fits: **SUV**



CC-2



## Key Features:

- 2 parts drawers
- 1 file drawer
- Storage compartment
- Low mounted command board
- Open storage with cargo netting in rear

Fits: **SUV**



CCF-1



## Key Features:

- Radio Panel
- 1 file drawer
- SCBA bracket in rear
- Cargo netting in rear
- A closed storage compartment
- Low mounted ratcheting command board
- 2 open storage compartments with adjustable shelf

Fits: **SUV**



CCF-2



## Key Features:

- Radio Panel
- 1 file drawer
- Low mounted ratcheting command board
- 2 open compartments with adjustable shelf
- A slide out wall for Command Board
- Cargo netting in rear with adjustable shelf

\*Shown with slide out carpeted tray upgrade

Fits: **SUV**



SU-1



## Key Features:

- A file drawer
- Mid mounted command board
- 5 open storage compartments

Fits: **SUV**



SU-2



## Key Features:

- A file drawer
- SCBA bracket in rear
- 5 open storage compartments
- Mid mounted command board
- Cargo netting in rear with adjustable shelf

Fits: **SUV**



Rockland Custom Products provides Firefighters and Departments with custom ways of storing gear and equipment in an open compartment cabinet or through the versatility of command cabinets featuring lighting and touch screen TV's. Our exclusive Illumi-Grille, along with our rock solid Platform Series, and the NFPA Compliant Gear-Clear System are just a few new products we developed to ensure Firefighter safety. We are always on the cutting edge developing and manufacturing products that the Firefighting industry needs and demands. That is the Rockland Difference! All of our products are conceptualized, designed, manufactured and tested here in the United States. Made from the highest quality and the most durable of materials, every product is custom made to meet the lasting needs of our customers, and outlast the life(s) of your vehicles. The entire Rockland line delivers custom, secure, practical, functional, and innovative products at an affordable price.



**EMS-1**



**Key Features:**

- 7 open compartments
- 4 adjustable shelves

Fits: **SUV**



**EMS-2**



**Key Features:**

- 7 open compartments
- 4 adjustable shelves
- Cargo netting in rear with adjustable shelf

Fits: **SUV**



**EMS-2T**



**Key Features:**

- 2 slide out aluminum trays with Lonseal™
- An open storage compartment
- A closed storage compartment

Fits: **SUV**



**EMS-RP**



**Key Features:**

- Radio panel
- 4 storage compartments
- A parts drawer
- Cargo netting in rear with adjustable shelves

Fits: **SUV**



**EMS-L**



**Key Features:**

- Temperature control compartment
- Slide out aluminum trays with Lonseal™
- 2 open compartments with adjustable shelf
- Closed open compartment in rear

Fits: **SUV**



**PU2DT**



**Key Features:**

- Designed for a pickup
- Two full length parts drawers
- Coated in bedliner

Fits: **PICKUP**



**PUPD**



**Key Features:**

- Designed for a pickup
- Large parts drawer with simplex lock
- Three parts drawers and a cubby
- Cargo netting on cabinet top
- Coated in bedliner

*\*Shown with optional D-handle latches.*

Fits: **PICKUP**



**OS-2**



**Key Features:**

- Designed for a covered pickup
- 2 separate cabinets
- 4 open shelves
- Cargo netting

Fits: **PICKUP**

Custom Fit. Maximum Functionality.





CUSTOM PRODUCTS™

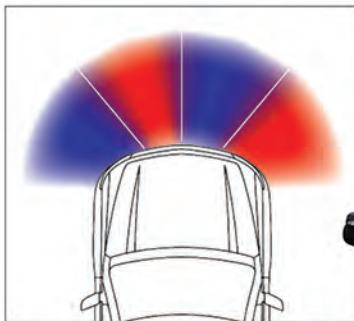


## Made For The Chevy Tahoe

*Fits 2017 "Active Shuttles" Tahoe*



### EXCEPTIONAL SCENE/TAKE DOWN LIGHTS



### FEATURES

- Fits four Whelen Pioneer Nano Scene lights (sold separately)
- Fits two pair of Whelen ION and/or ION V-Series warning lights (sold separately)
- Easy to install
- Laser measured for an OEM seamless fit
- Scene/Flood lighting combined with Wig Wag flashing functions
- Manufactured for an OEM fit for the grille of a Chevy Tahoe
- Full Intersection coverage without having to cut any holes in the vehicle

### Lightheads Sold Separately

Whelen Pioneer Nano Scene Lights | Whelen ION | Whelen ION V-Series



Rockland Custom Products provides Firefighters and Departments with custom ways of storing gear and equipment in an open compartment cabinet or through the versatility of command cabinets featuring lighting and touch screen TV's. Our exclusive Illumi-Grille, along with our rock solid Platform Series, and the NFPA Compliant Gear-Clear System are just a few new products we developed to ensure Firefighter safety. We are always on the cutting edge developing and manufacturing products that the Firefighting industry needs and demands. That is the Rockland Difference! All of our products are conceptualized, designed, manufactured and tested here in the United States. Made from the highest quality and the most durable of materials, every product is custom made to meet the lasting needs of our customers, and outlast the life(s) of your vehicles. The entire Rockland line delivers custom, secure, practical, functional, and innovative products at an affordable price.



Now Available

## Made For The Ford Interceptor Utility



### FEATURES

- Fits two Whelen Pioneer Nano Scene lights (sold separately)
- Fits two pair of Whelen ION and/or ION V-Series warning lights (sold separately)
- Easy to install
- Laser measured for an OEM seamless fit
- Scene/Flood lighting combined with Wig Wag flashing functions
- Manufactured for an OEM fit for the grille of a Ford Interceptor Utility
- Full Intersection coverage without having to cut any holes in the vehicle

### Lightheads Sold Separately

Whelen Pioneer Nano Scene Lights | Whelen ION | Whelen ION V-Series

Contact your local Whelen Representative to purchase.







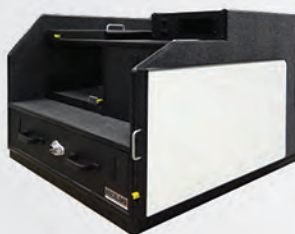
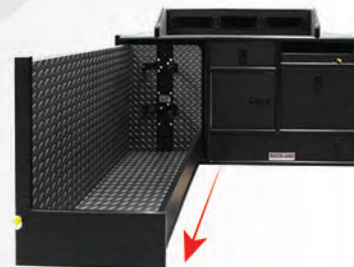
# Photo Gallery

CUSTOM PRODUCTS™

## HAVE AN IDEA?

*We'll build it to meet your needs.*

*Shown below are popular upgrade placements*



Vinyl | Carpet | Custom cup holders | Compartments  
Radio panels | Custom fit for all vehicle sizes





While you are away from your vehicle hunting, fishing or enjoying the great outdoors for extended periods of time, rest assured that you will have complete peace of mind and security with a cabinet from Rockland Custom Products in the back of your vehicle. All of our vehicle storage cabinet systems are custom made to meet the lasting needs of today's Hunting, Fishing and Outdoor enthusiast. From SUV's, Pick Up Trucks, Jeeps and everything in-between, our talented and master craftsman will design and build a cabinet specifically to fit your needs and vehicle, so your hunting, fishing and expensive equipment and gear will remain secure and organized. We are always on the cutting edge developing, using and manufacturing products like our secure platform series, our weather resistant bed-liner cabinet coating, to our line of Illumi products. That is the Rockland Difference! Our Rugged Cabinet, Console and Vehicle accessory line delivers custom, secure, practical, and functional products at an affordable price for the avid Sportsman and Off-Road Adventurer.



# BUILT TO FIT YOUR *Lifestyle!*

## Practical Adventurer

### FEATURES:

- Two pull out storage drawers with a push key lock
- Tie downs on top of cabinet to secure items in place
- Made to fit a Jeep™ Wrangler
- Optional bed-liner spray coating available for a tough, weather resistant coating

Fits: **JEOP**



## Rugged Hauler

### FEATURES:

- Two pull out storage drawers with heavy duty Vector Latch with lock
- Removable compartments and sections to maximize space
- Custom made to fit any truck bed length
- Sprayed with bed-liner for a tough, weather resistant coating

Fits: **PICKUP**



## Rugged Wheeler

### FEATURES:

- Pull out storage drawer with a heavy duty Vector Latch with lock
- Open compartment covered in a non-slip LonSeal™
- Made to fit a Jeep™ Wrangler
- Sprayed with bed-liner for a tough, weather resistant coating
- Great for storing beach, hiking gear or other equipment

Fits: **JEOP**



## Rugged Outdoorsman

### FEATURES:

- Weapons Drawer with customizable foam
- Drawer Compartments
- Non-slip LonSeal™ additional workspace
- Custom made to fit any SUV or Truck

Fits: **PICKUP**



## Practical Trapper

### FEATURES:

- Pull out storage drawer with a key latch option
- Key latch flip top opens for deep storage
- Removable compartments and sections to maximize space
- Custom made to fit any truck bed length
- Sprayed with bed-liner for a tough, weather resistant coating

Fits: **PICKUP**





Can the cabinet designs shown on the site and in the catalog be enhanced or changed to meet my specifications?

**Of course!** Almost every cabinet inquiry requested has started out as one of our standard models, but quickly turns into a one of a kind cabinet! We work with our customers one on one to make sure your cabinet will meet and exceed your needs and provide maximum functionality.

### Finishing



Lonseal™  
Black



Lonseal™  
Sapphire



Lonseal™  
Red



Lonseal™  
Gunmetal



Aluminum  
Diamond Plate



Bedliner



ABS  
Black



Carpet  
Grey, Black



HDPE  
Black



Powder Coated  
Aluminum Drawer

How do I care for my Rockland Custom Cabinet?

**It's Easy!** Carpeted surfaces should be vacuumed periodically. Doors and drawers should be cleaned with Simple Green or ArmorAll. Lonseal surfaces should also be wiped down with Simple Green or ArmorAll making sure surface is dry. If tracks or rollers need service, do so with a silicone spray. Oil-based lubricants will attract and hold dust and dirt particles which can effect function and cause damage.

Looking For  
Another Style?



a. Mahogany / b. Cherry / c. Maple / d. Oak

### Technology



Gear Clear Chamber



Interior Cabinet  
Lighting



Outlets & Switches



Radio Panels



12 Volt & 110 Volt  
& USB Ports



Temperature Control Units  
& Ventilation



Rockland Custom Products makes it easy to customize your cabinet! Choose from a variety of locks, carpet and LonSeal™ colors, handles, latches, radio panel accessories, command boards, interior lighting, cargo netting, temperature controls, and much more. Any of these options can be added providing you with a cabinet that fits, meets and exceeds your needs.



**How do I go about getting an option that's not shown in your catalog?**

Though we already offer a wide variety of options, there are times when a specific accessory is needed. We try to accommodate our customers to the fullest and are always happy to discuss any special requests needed.

## // Organizational



Cargo Netting



Short & Long  
Drawer Dividers



Protective Foam



File & Parts Drawer



Magnetic Command  
Boards



Mounted SCBA  
Brackets



Pop-up SCBA  
Brackets



Ratcheting  
Command Boards



Slide-out Carpeted  
Trays



Slide-out  
Command Boards



Positioning Hinges



Tie Down Latches

**Can the lock passcode be customized?**

**Yes!** Information on how to set or change your lock passcode is shipped in the installation kit. If for some reason, you do not have this information please call us at (855) 808-2597 and speak with a technician.

## // Locks & Handles



Round Latches



Full Length Handles



Short Length Handles



Matte Black & Chrome Plated  
Recessed Spring Loaded Handle



Spring Loaded Handle



Electronic Keypad Lock



Latch with Key Override



Compression Latch



Simplex Lock with Key Override



Locking T-Handle